

Coronavirus: The Global Economic Threat

Mark Zandi, Cristian deRitis, Ryan Sweet,
Steve Cochrane, Katrina Ell and XiaoChun Xu

February 6, 2020

MOODY'S

MOODY'S
INVESTORS SERVICE

MOODY'S
ANALYTICS

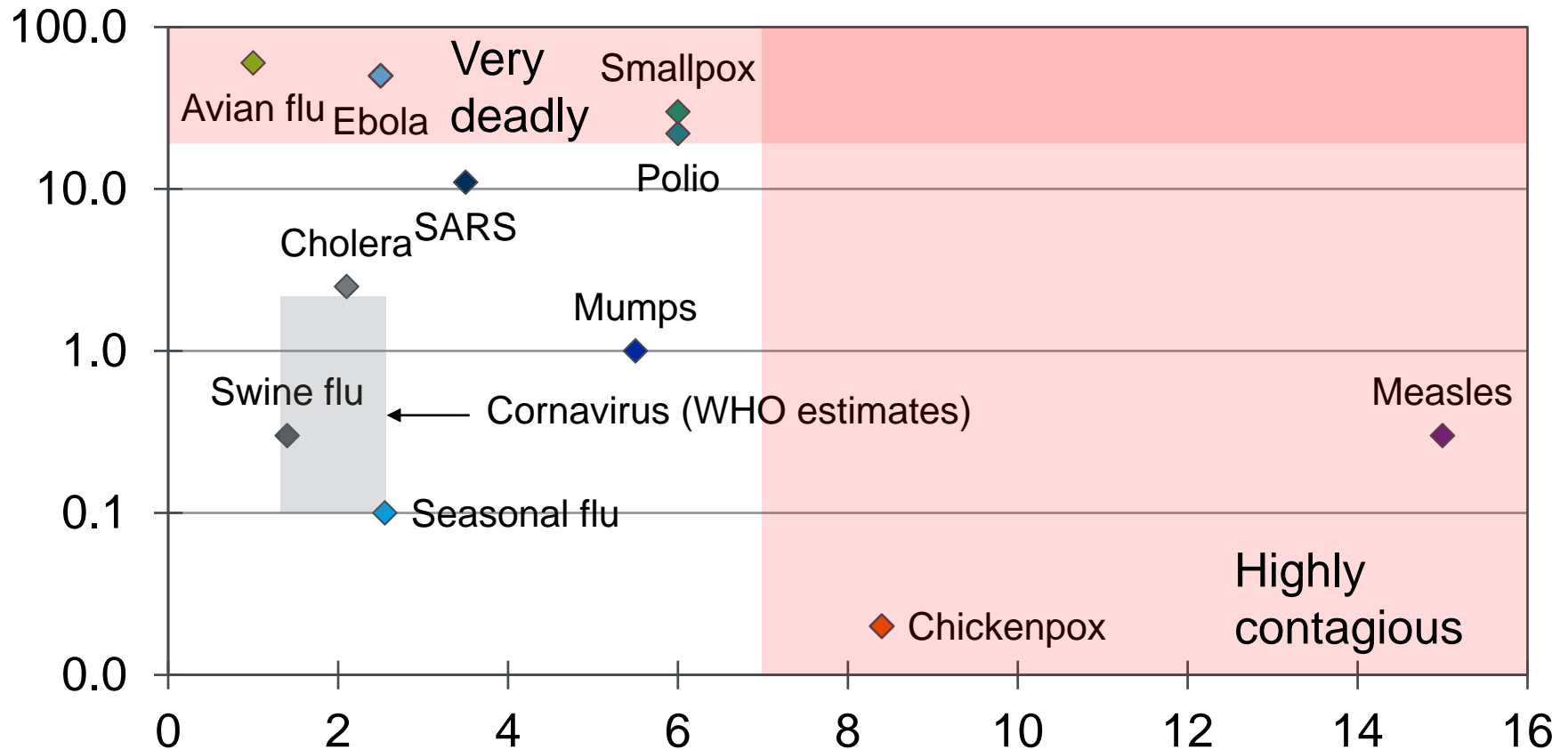
Moody's Analytics operates independently of the credit ratings activities of Moody's Investors Service. We do not comment on credit ratings or potential rating changes, and no opinion or analysis you hear during this presentation can be assumed to reflect those of the ratings agency.

1

Gauging the Virus

How Widespread and How Virulent?

X-axis: Contagiousness (R_0), Y-axis: Mortality rate (% , log scale)



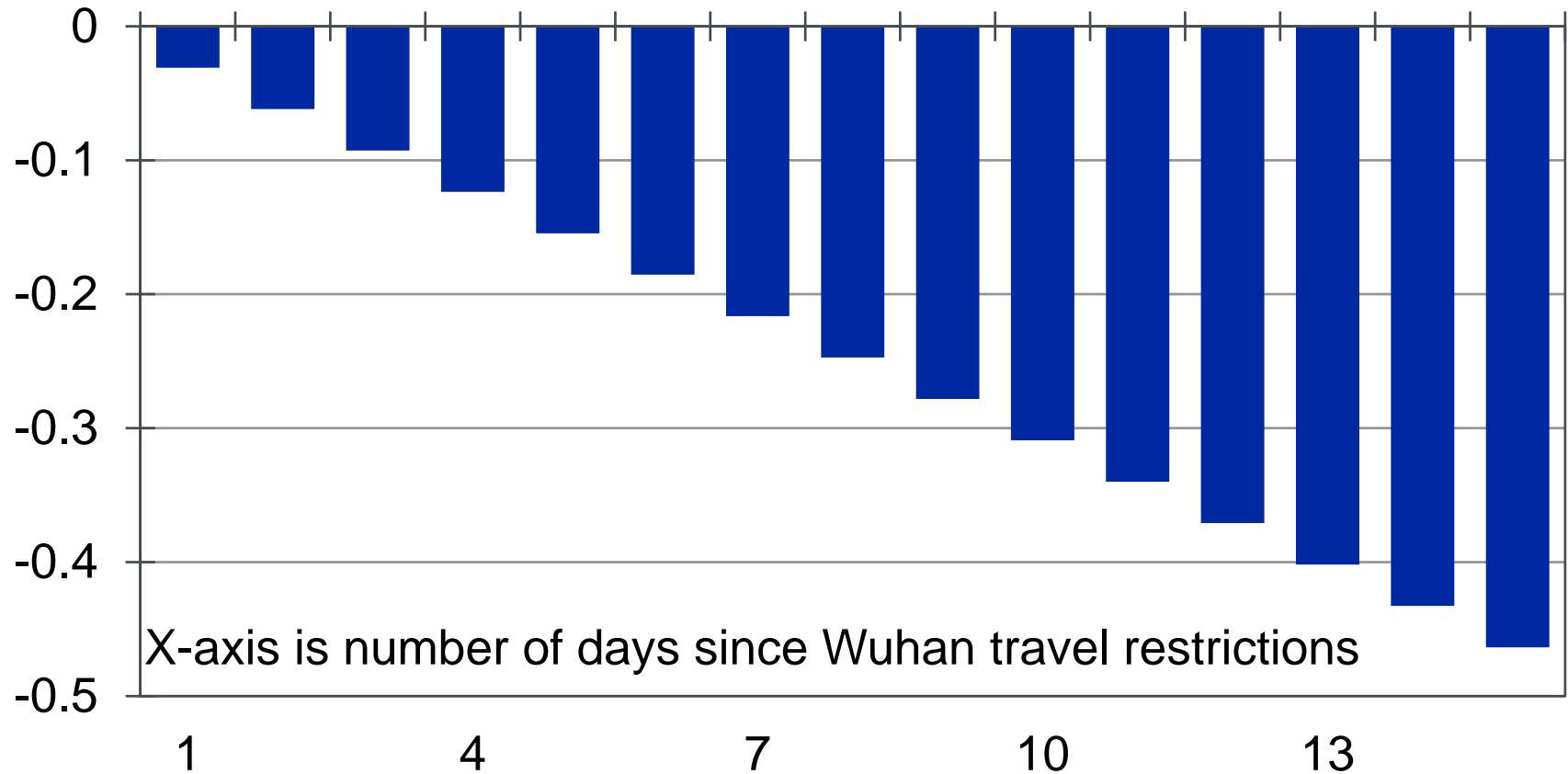
Sources: CDC, WHO, various studies, Moody's Analytics

2

Chinese Economic Impact

Body Blow to China

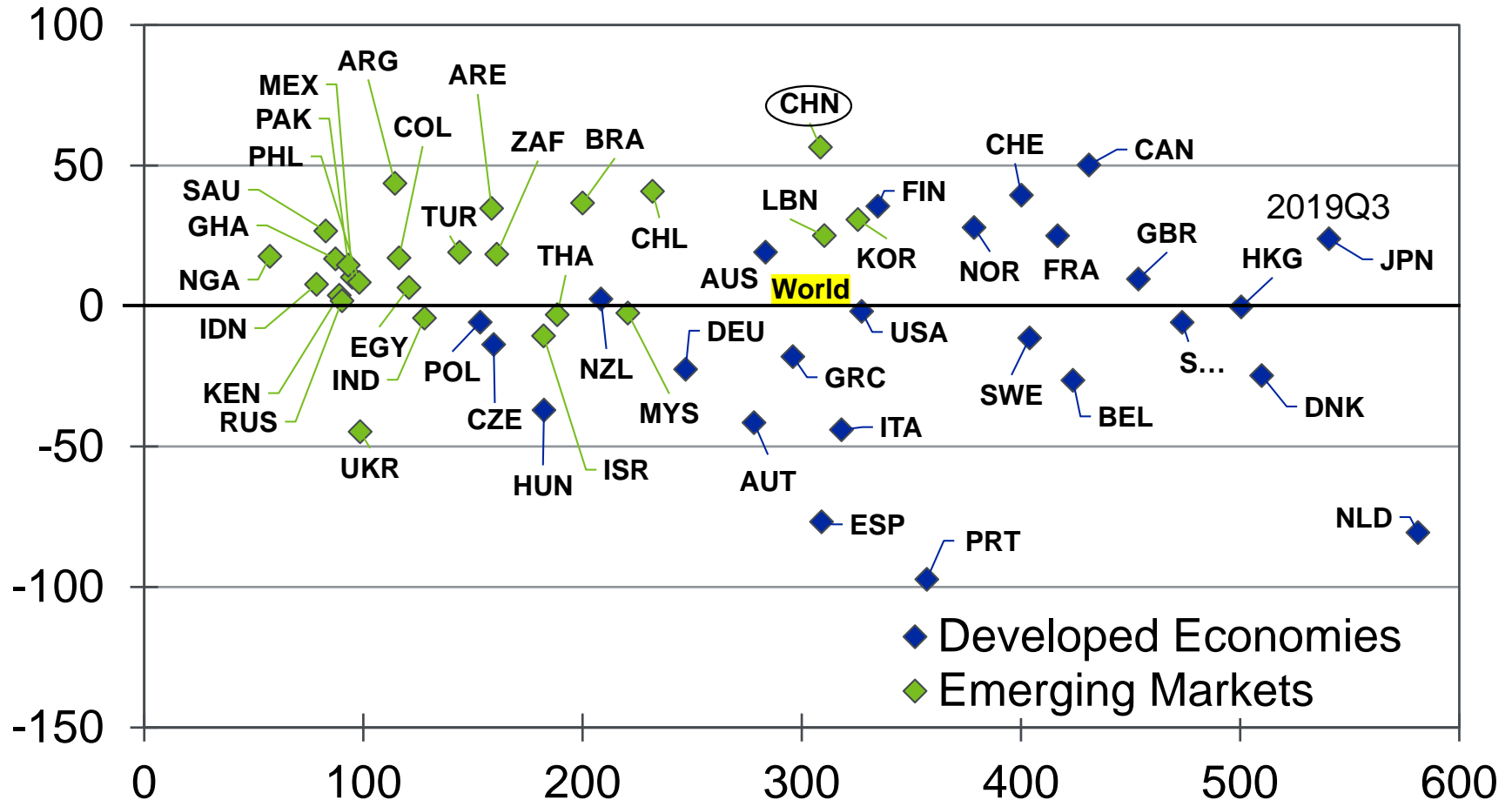
Cumulative lost output, % of China GDP, ppt



Source: Moody's Analytics

China's Debt Load is High and Rising

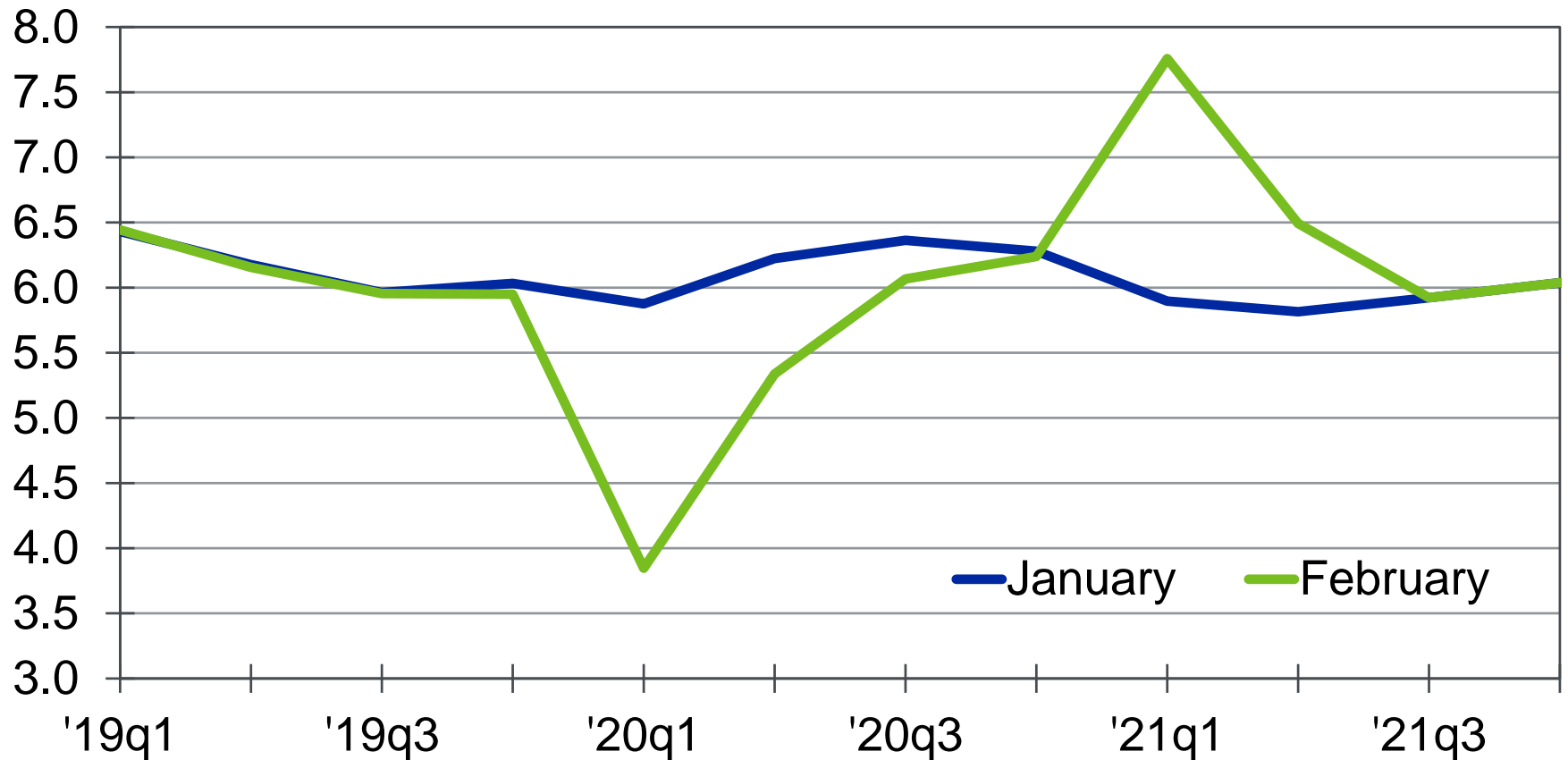
Total debt-to-GDP ratio, % (x-axis), 5-yr change, ppts, (y-axis)



Sources: IIF, Moody's Analytics

China's Economic Outlook

China real GDP by forecast vintage, % change yr ago



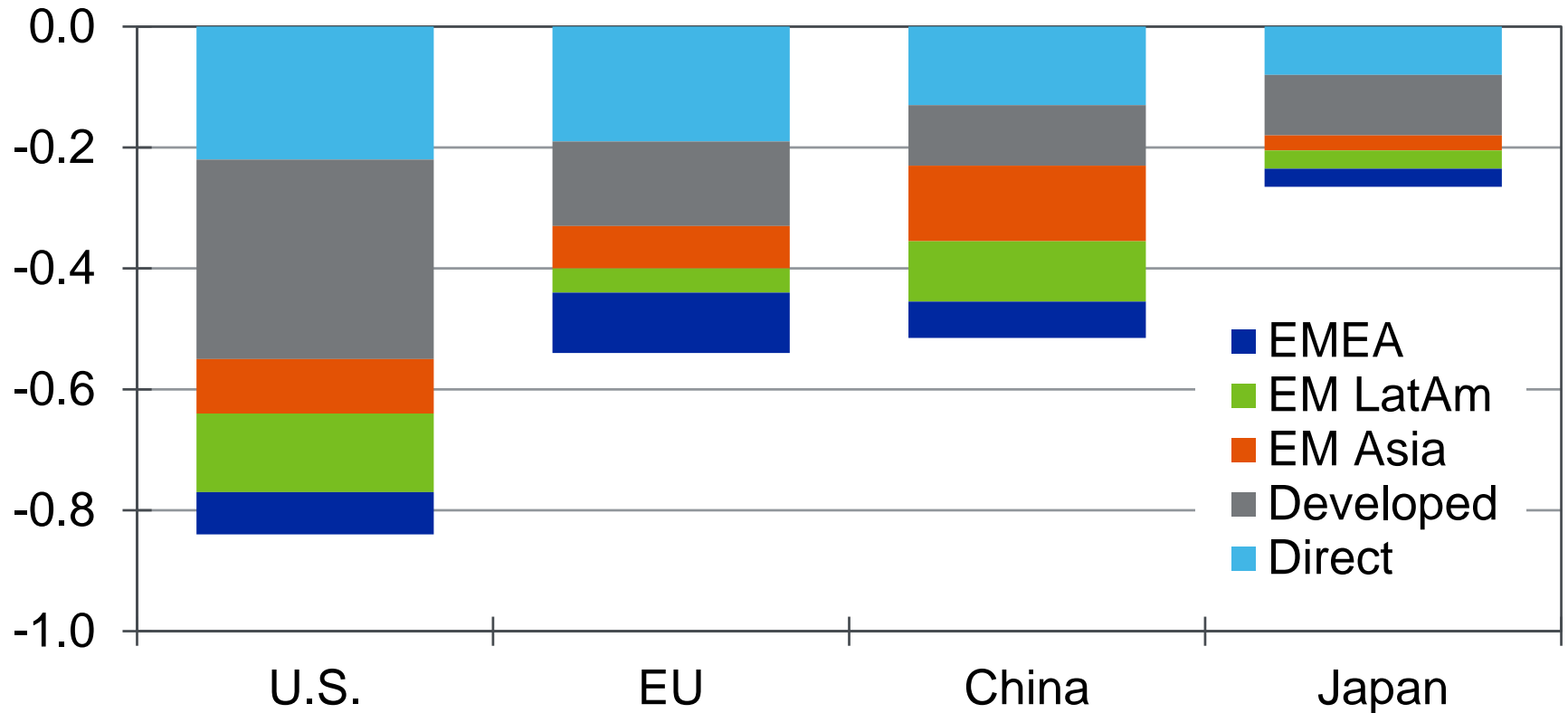
Sources: National Bureau of Statistics, Moody's Analytics

3

Global Economic Impact

Virus Will Hurt Global Economies

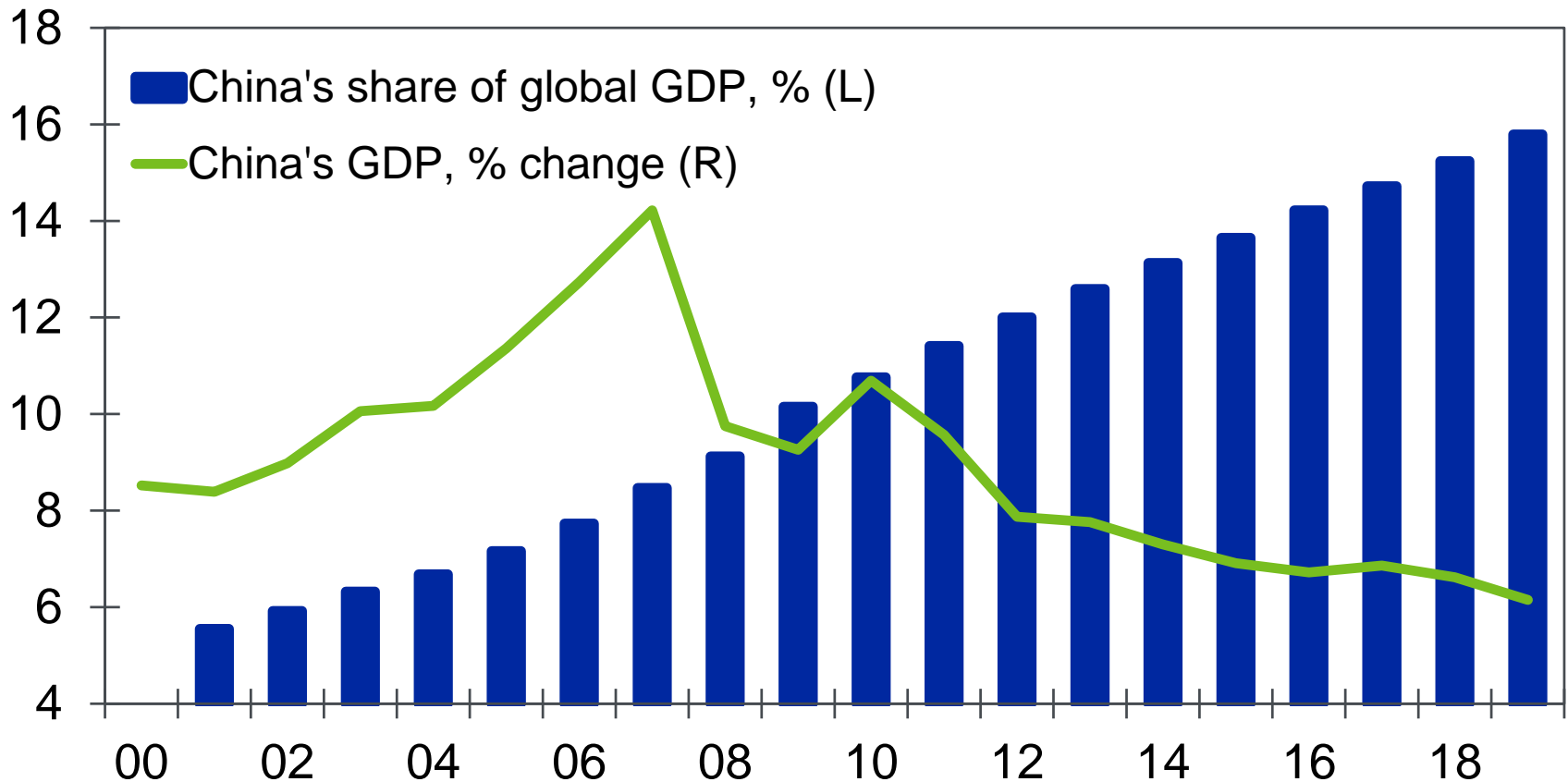
Ppt contribution to global GDP growth from 1% deceleration in GDP growth of specified country



Source: Moody's Analytics

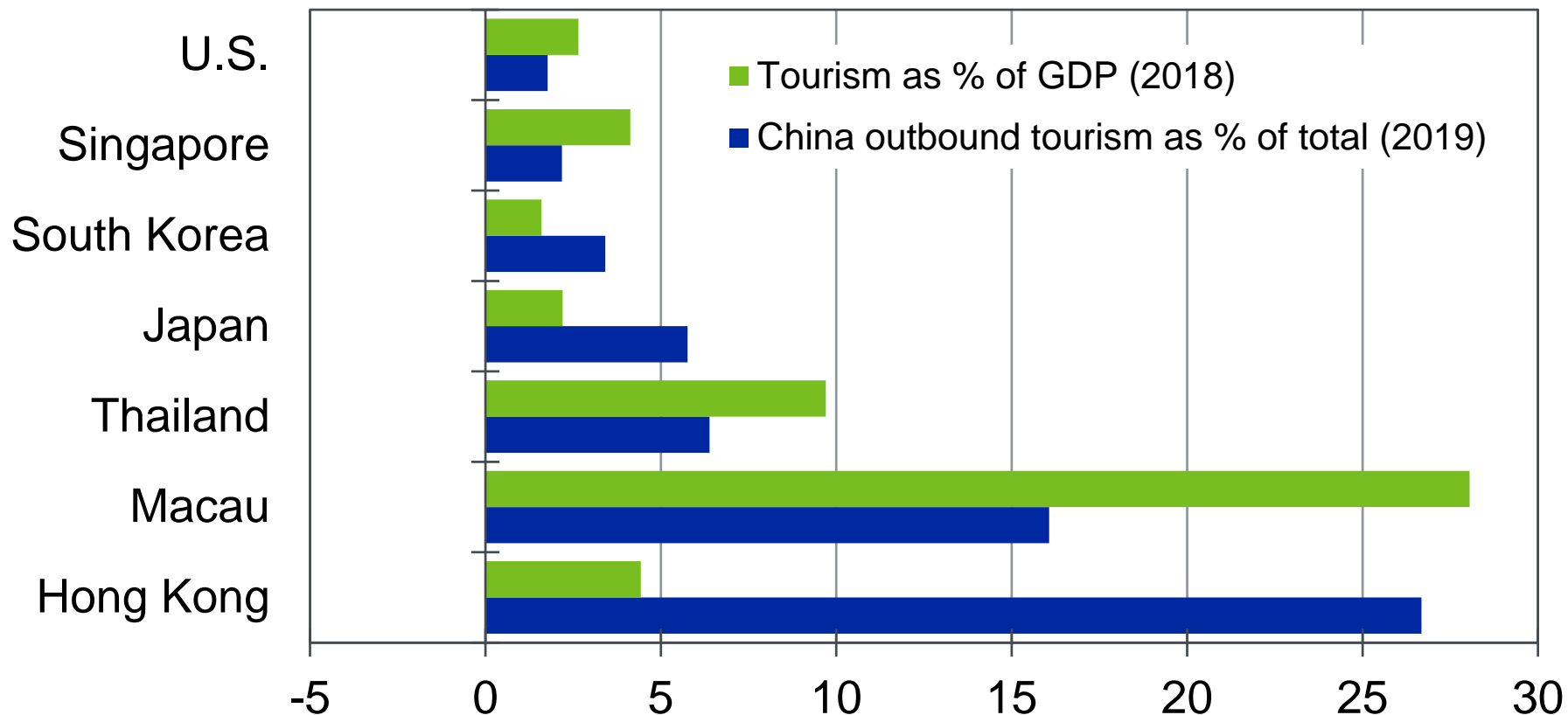
China's Role in the Global Economy

China's real GDP



Sources: National Bureau of Statistics, Moody's Analytics

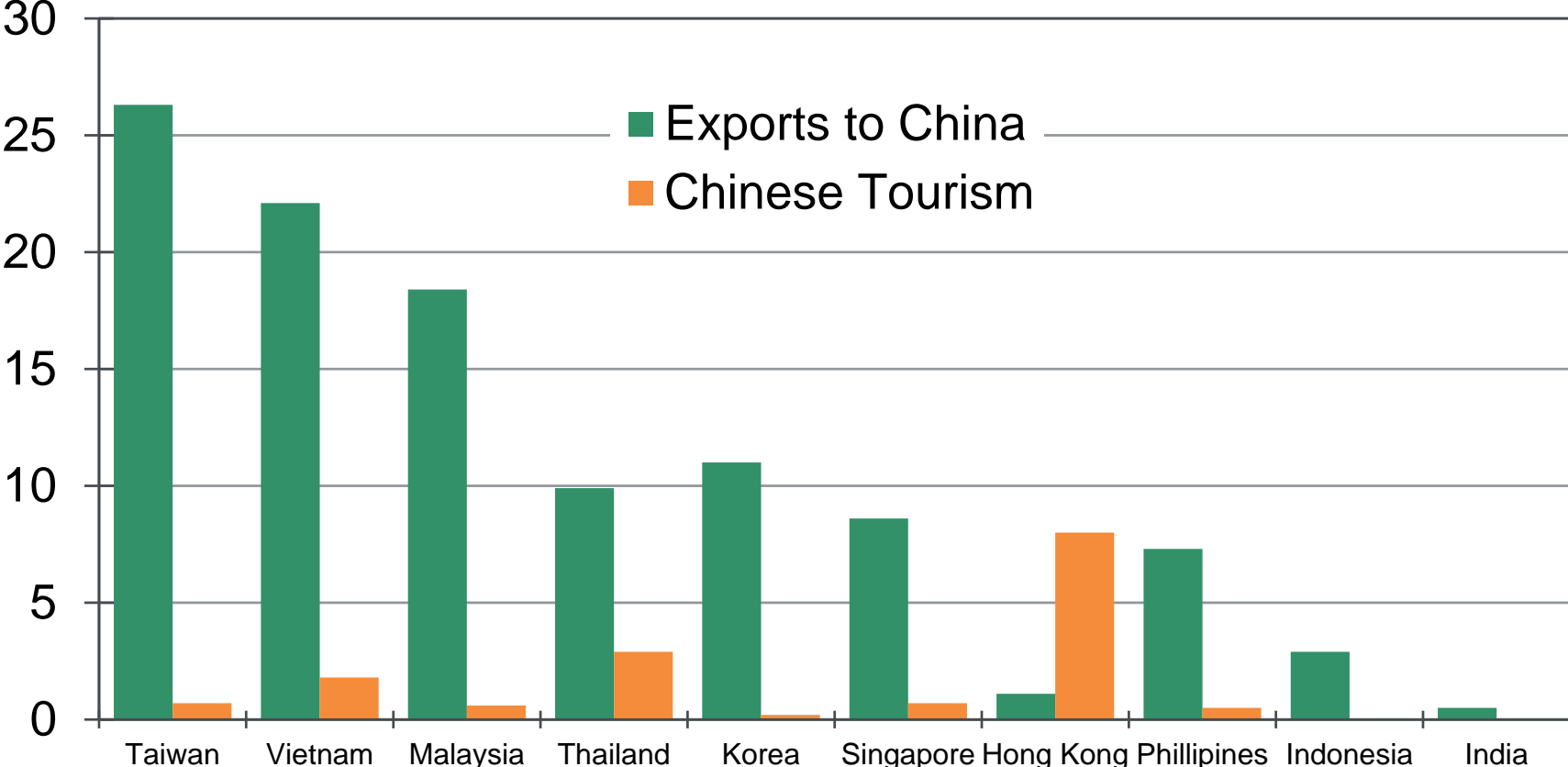
Exposure to Chinese Tourism



Sources: World Travel and Tourism Council, China Outbound Tourism Research Institute, Moody's Analytics

Asian Economies are Highly Exposed

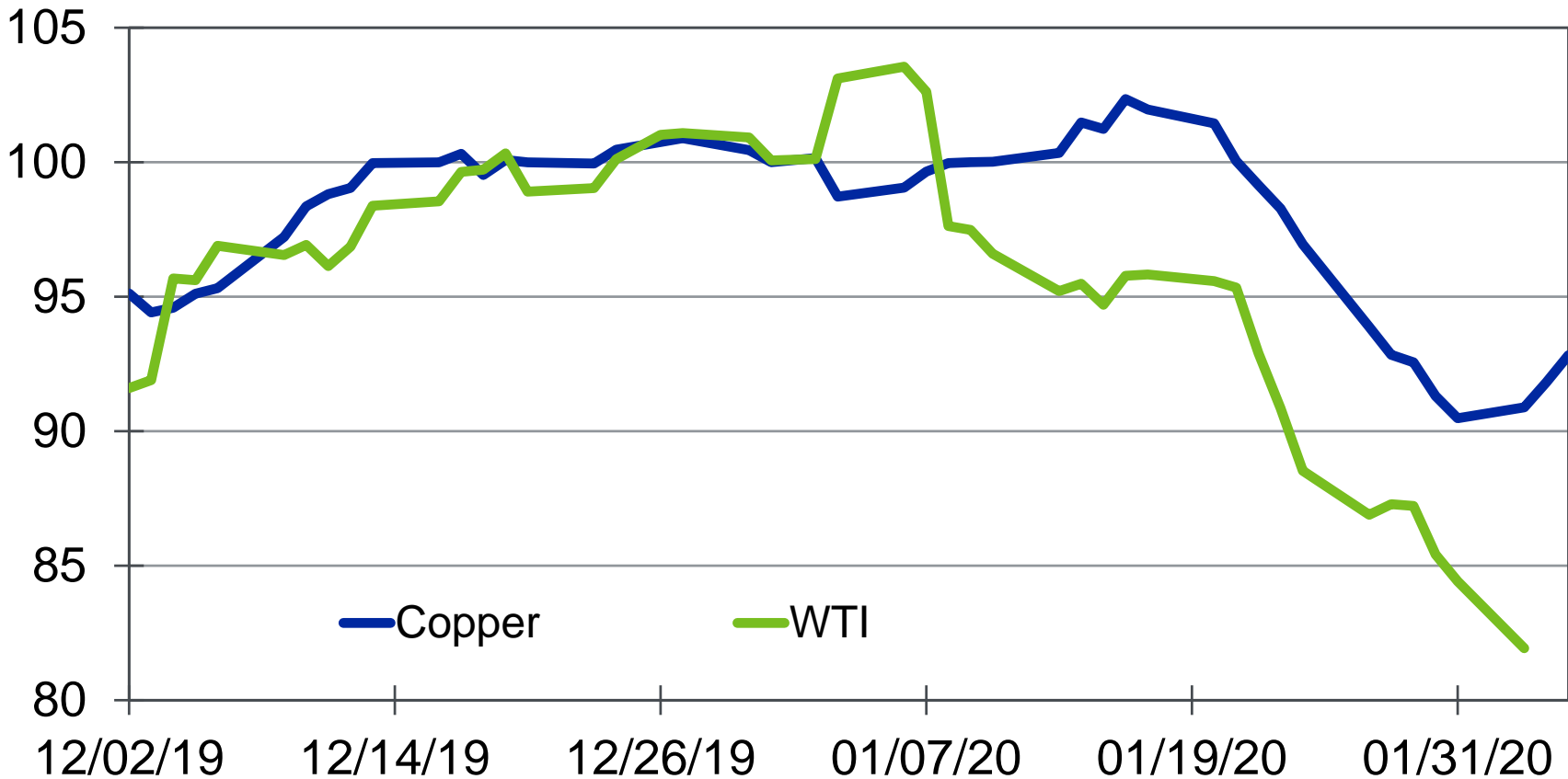
% of GDP, 2018



Sources: IMF, Government sources, Moody's Analytics

Commodity Prices Take It on the Chin

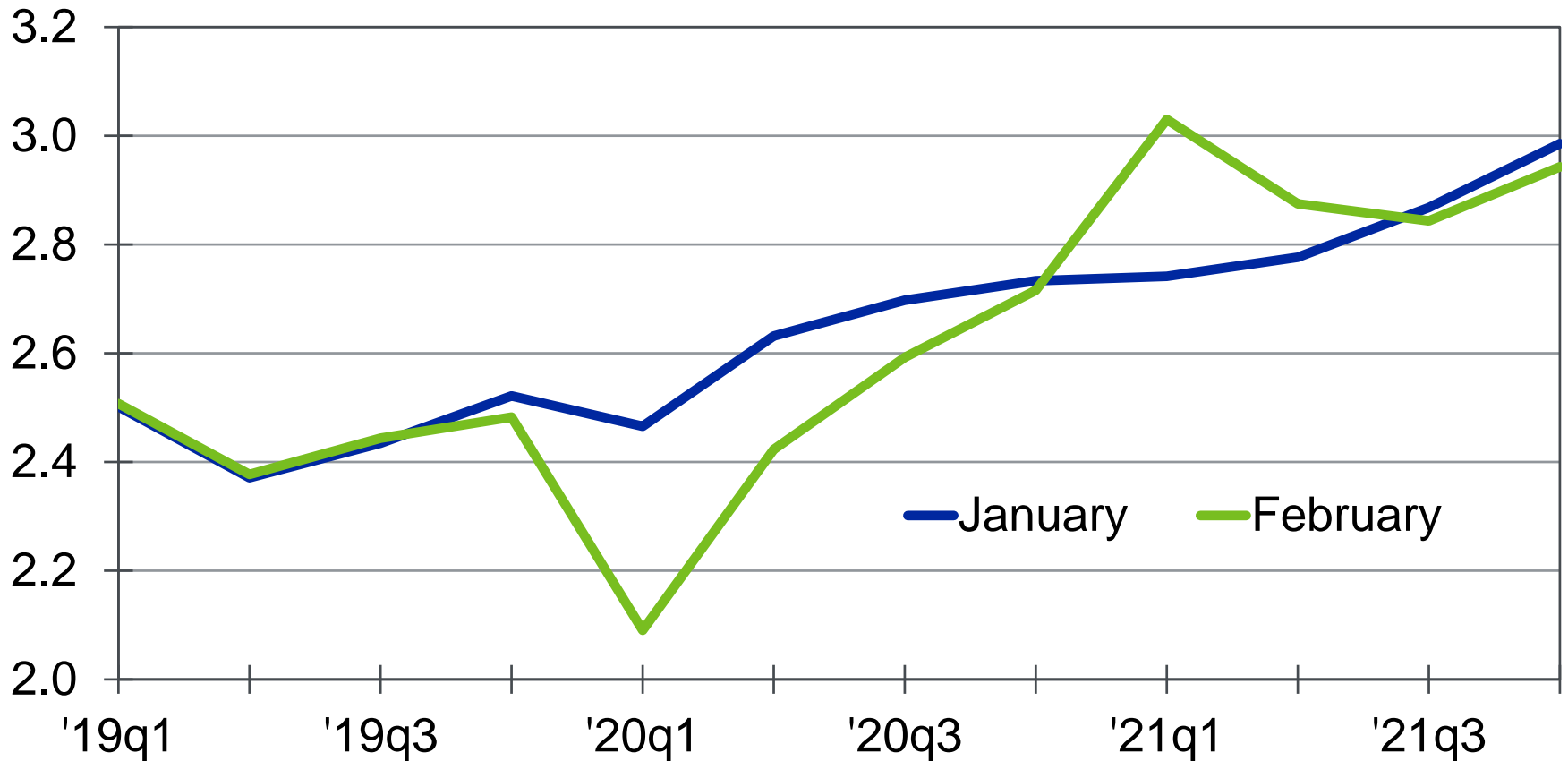
Commodity prices, Dec 31, 2019 = 100



Source: EIA, LME, Moody's Analytics

Global Economic Outlook

Global real GDP by forecast vintage, % change yr ago



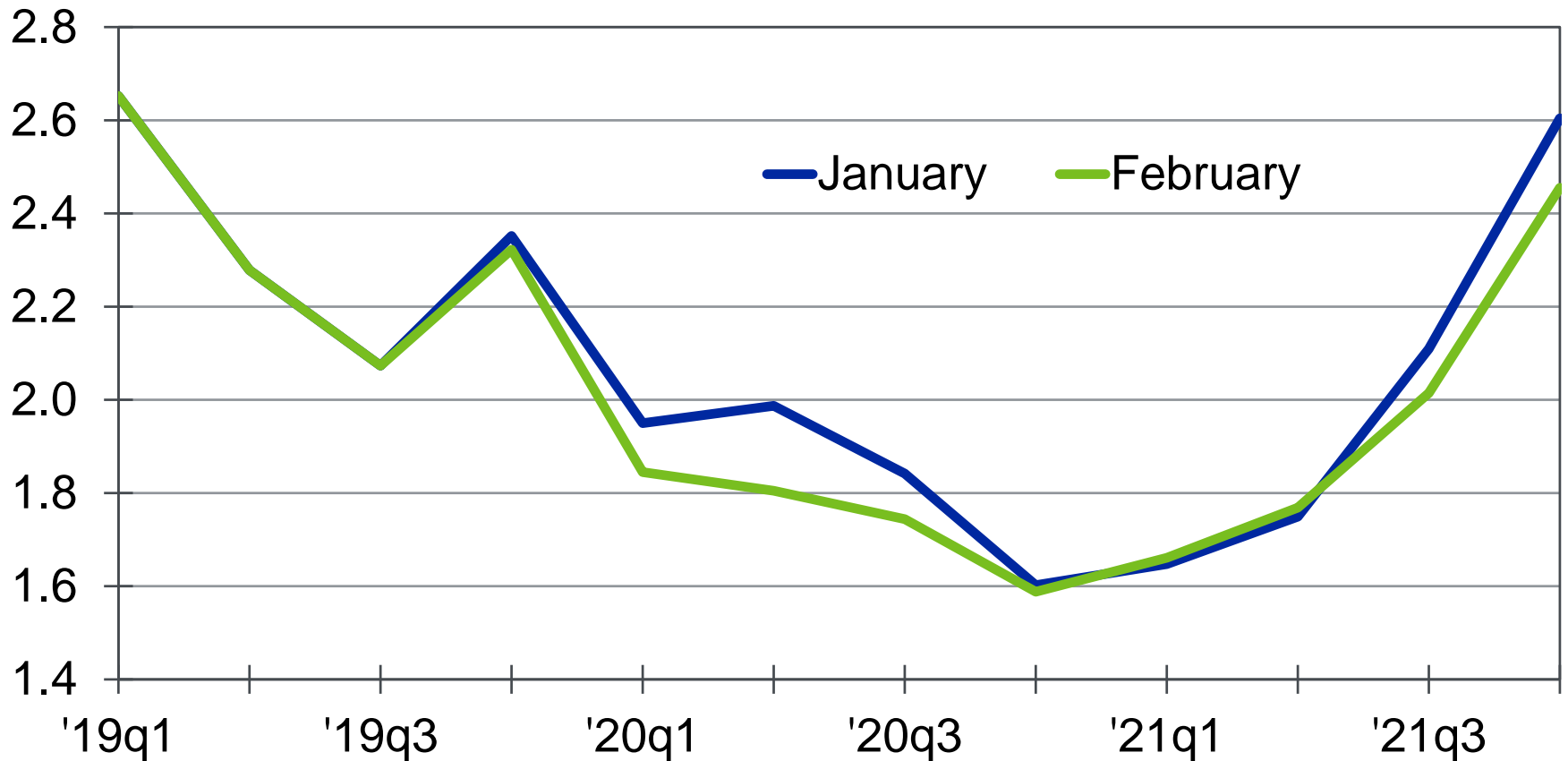
Sources: Moody's Analytics

4

U.S. Economic Impact

U.S. Economic Outlook

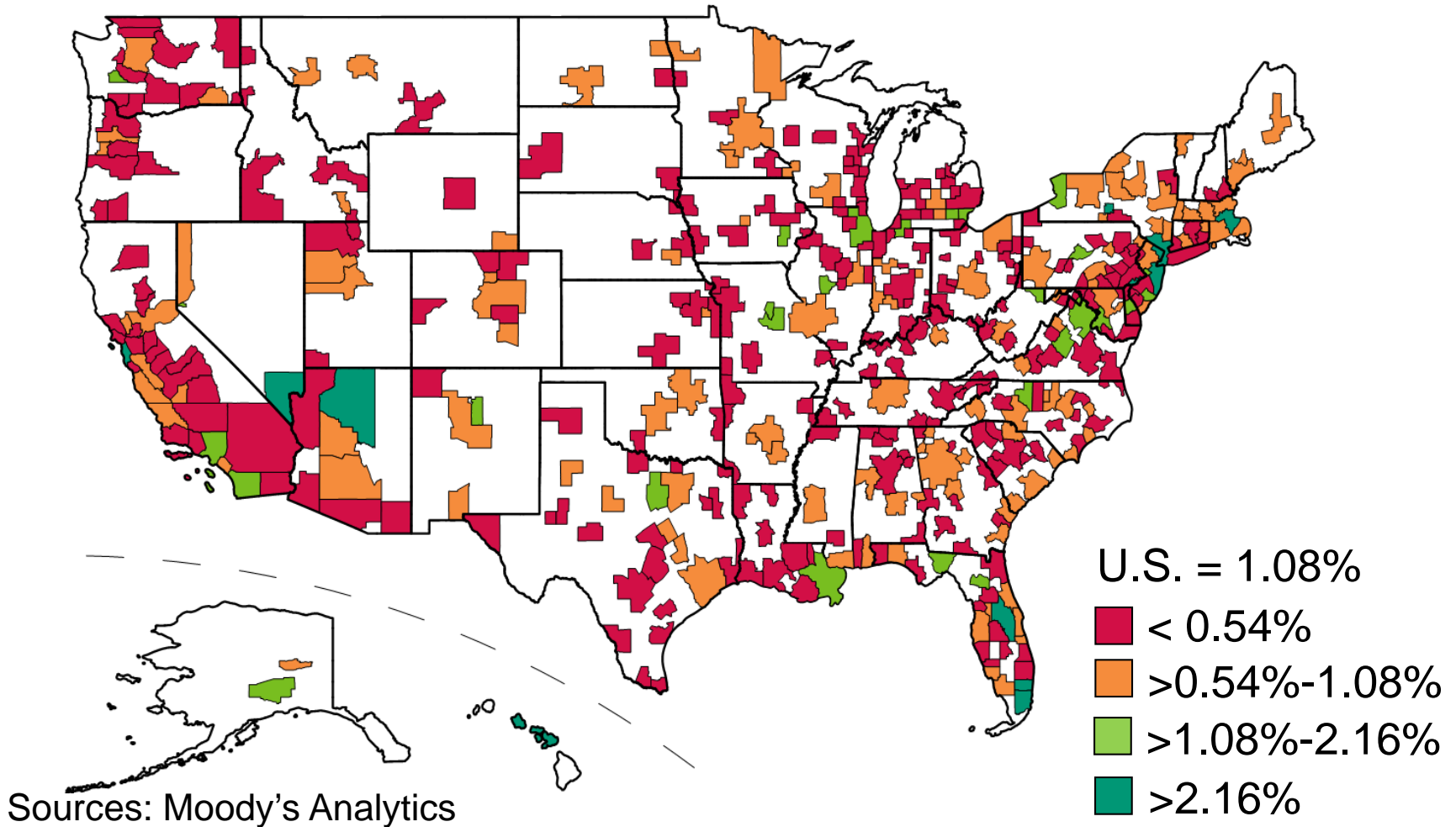
U.S. real GDP by forecast vintage, % change yr ago



Sources: BEA, Moody's Analytics

Regional Vulnerabilities

Travel exports, % of GDP, 2016

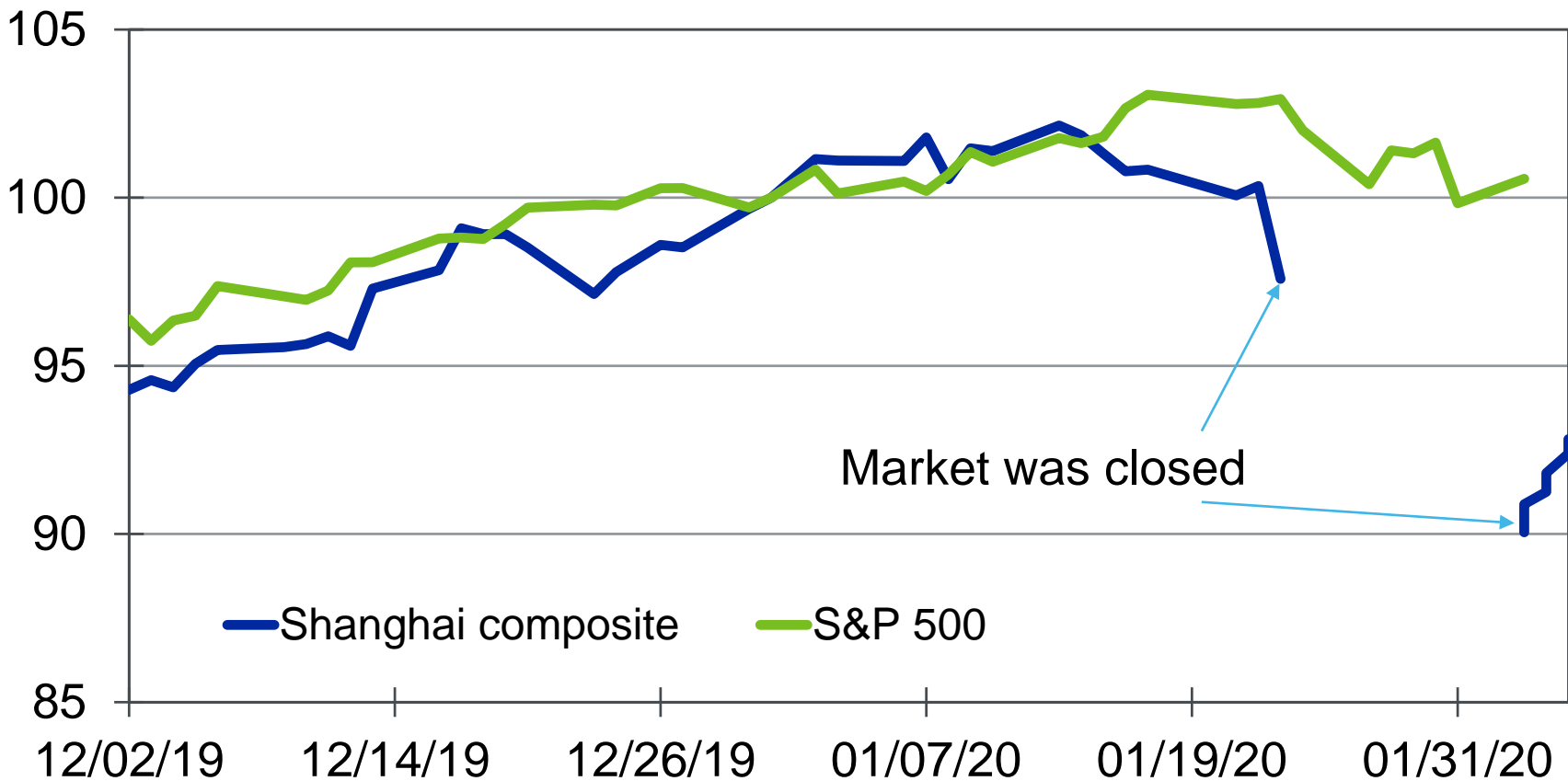


5

The Risks

Equity Markets Hang Tough (So Far)...

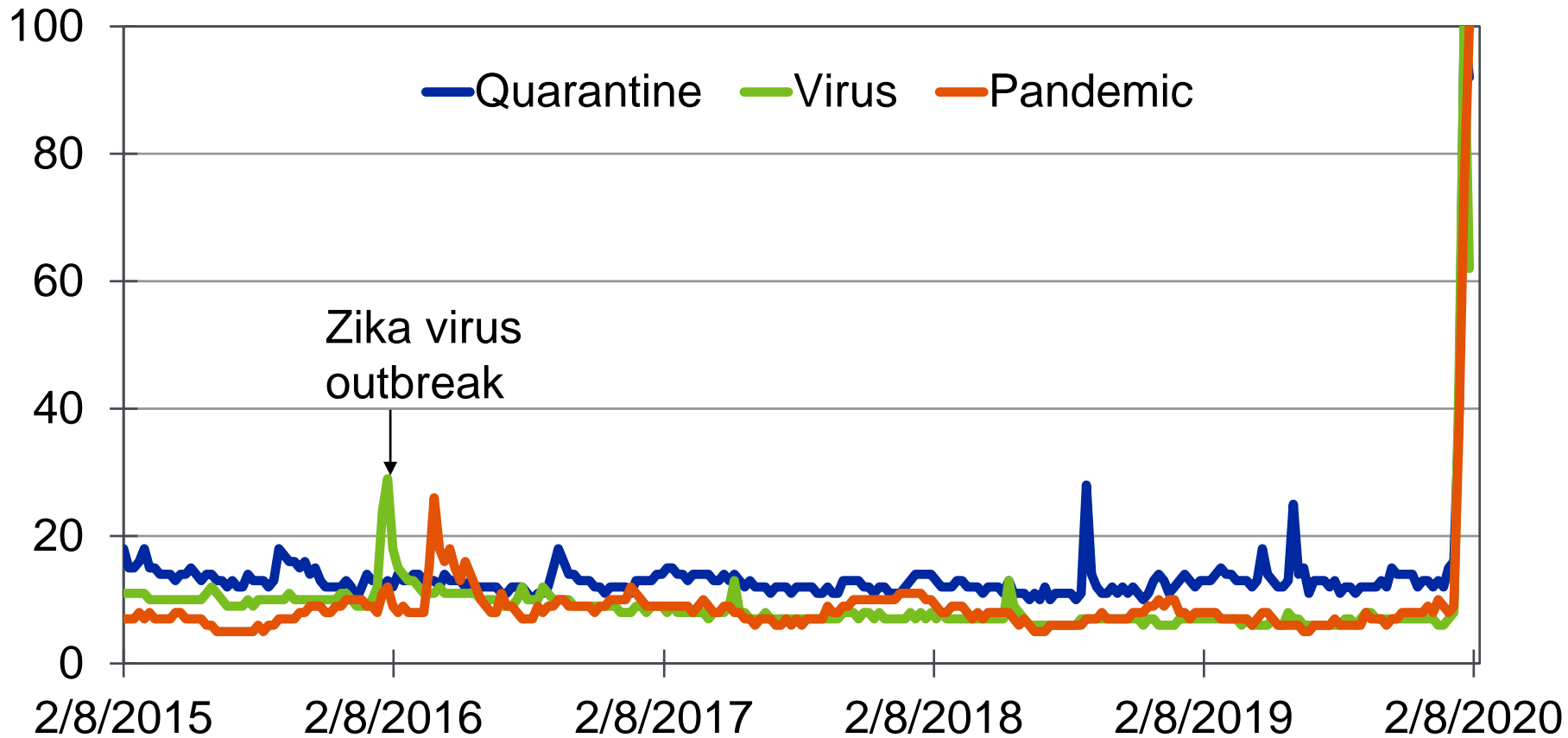
Equity prices, Dec 31, 2019 = 100



Source: Bloomberg LP, Moody's Analytics

...But Sentiment Is Fragile

Google search term (worldwide), 100=peak interest



Sources: Google Trends, Moody's Analytics

Q&A

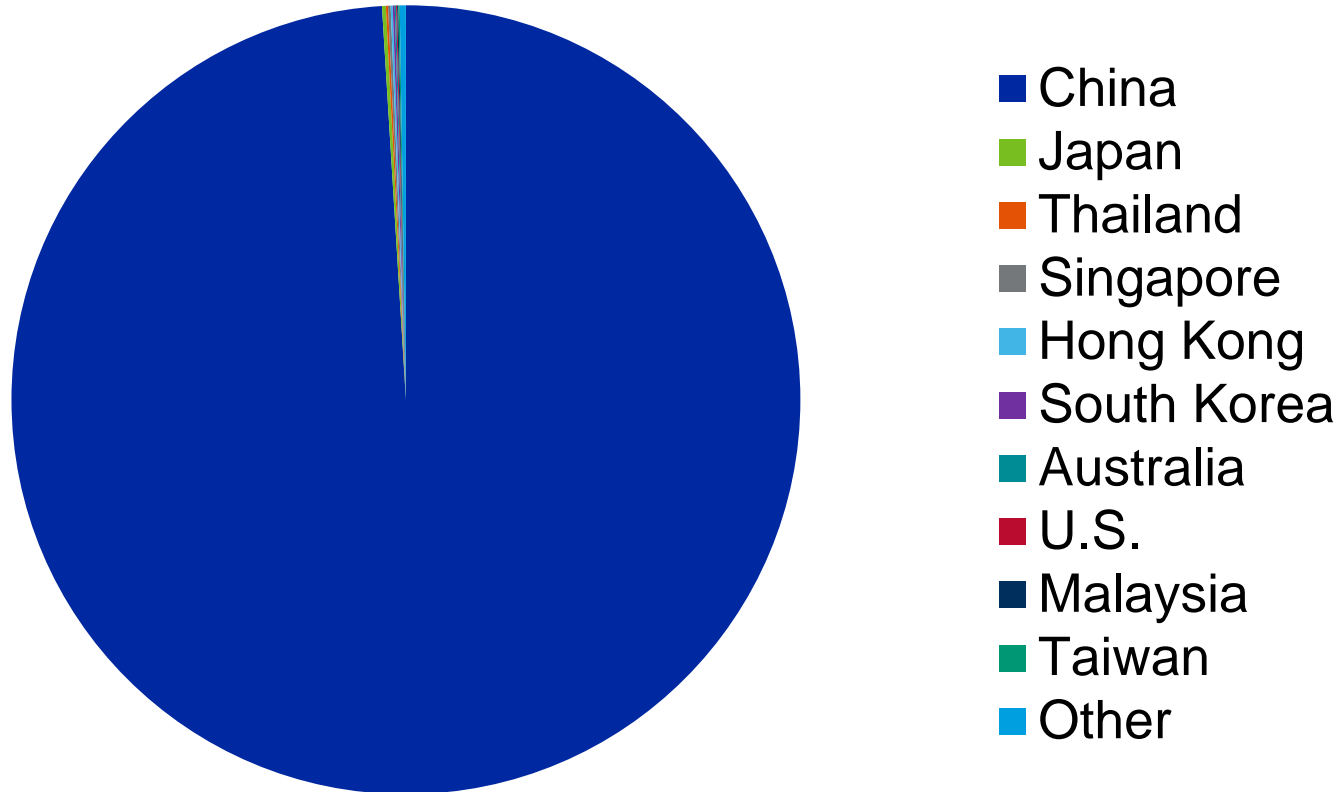
Questions? Contact us at help@economy.com

6

Appendix

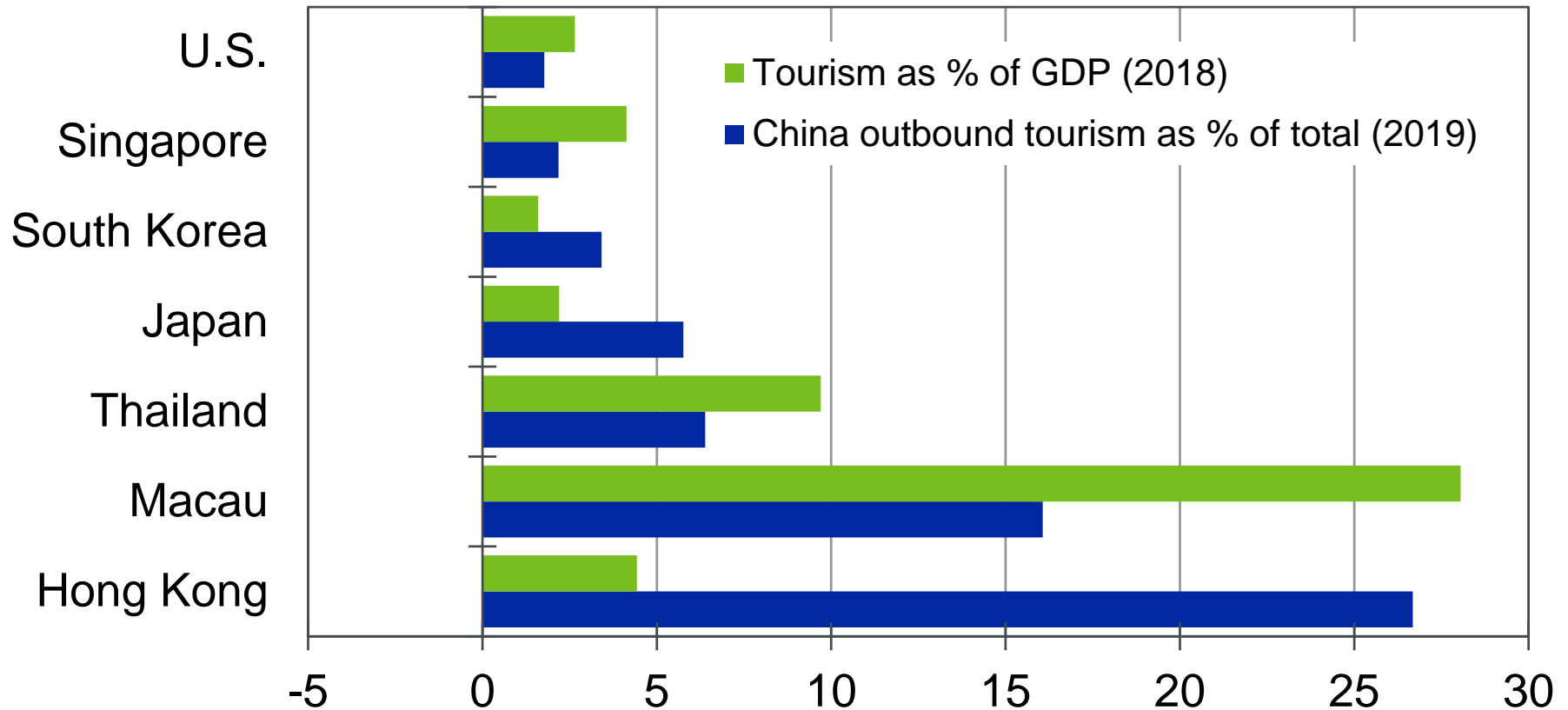
Outbreak Is Contained to Mainland China

Coronavirus cases by country as of Feb 5, 2020



Sources: Worldometer, Moody's Analytics

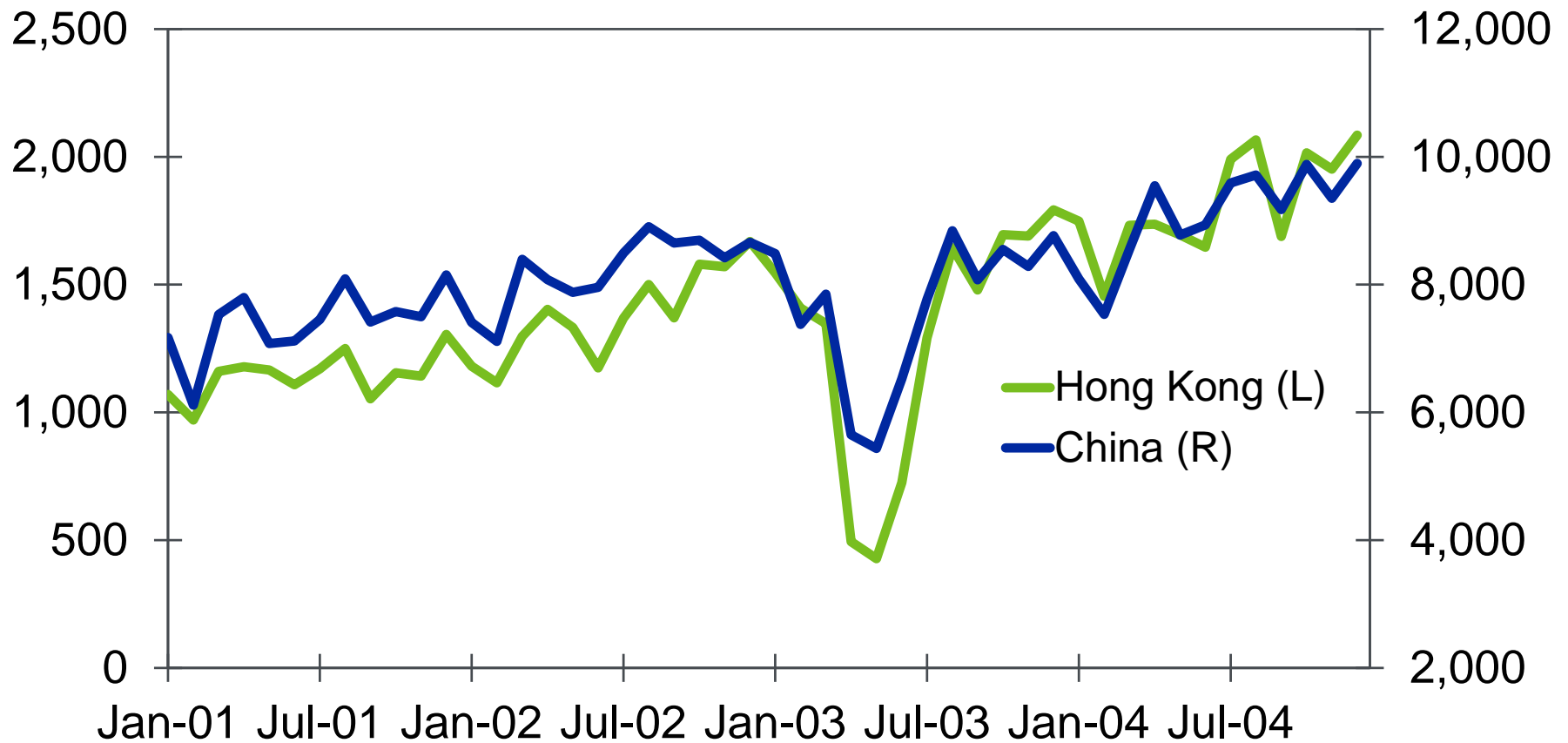
Varying Exposure to Mainland Tourism



Sources: World Travel and Tourism Council, China Outbound Tourism Research Institute, Moody's Analytics

Arrivals Fell Sharply With 2003 SARS

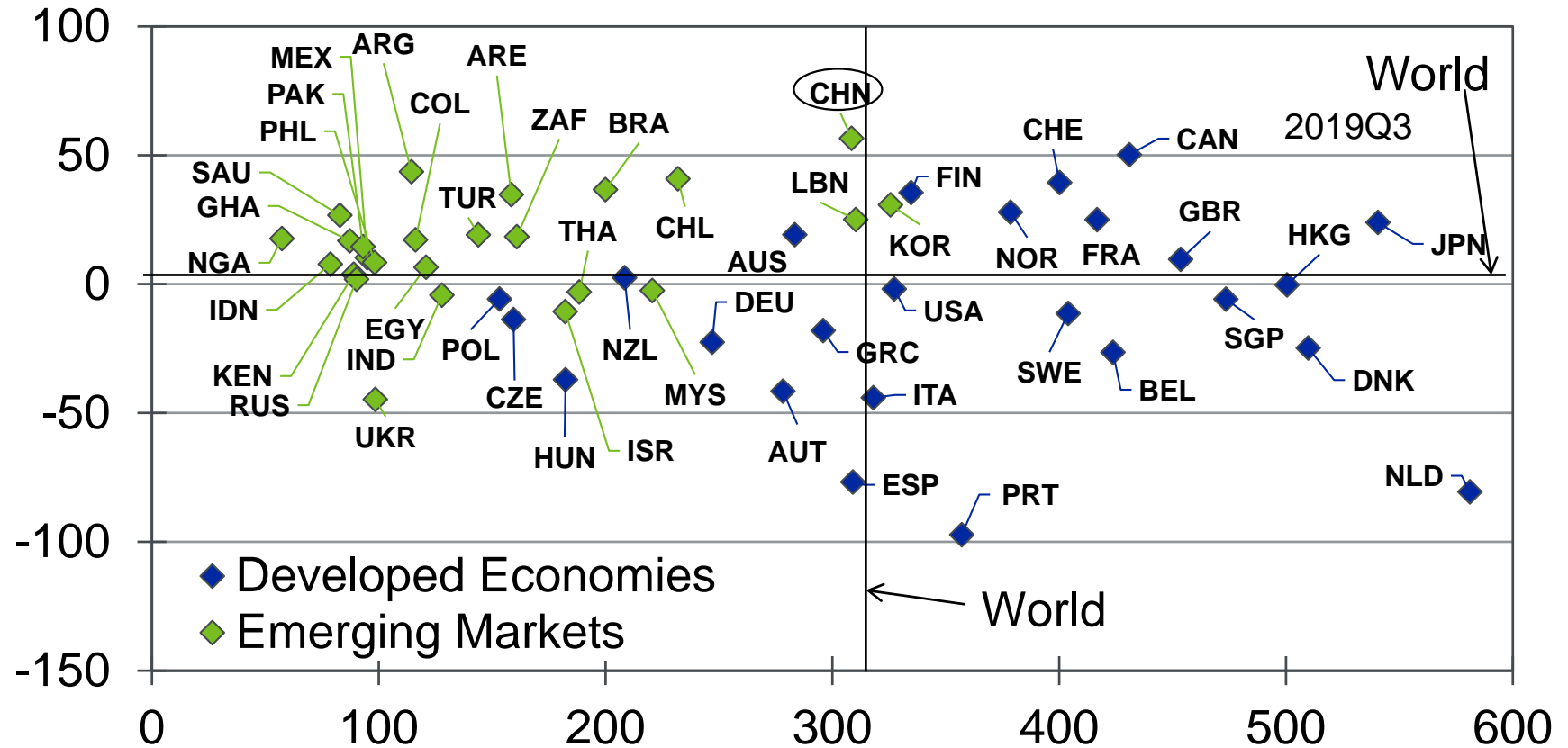
Thousands of persons



Sources: Hong Kong Tourism Board, China National Tourism Administration, Moody's Analytics

China's Debt Is Rising Rapidly

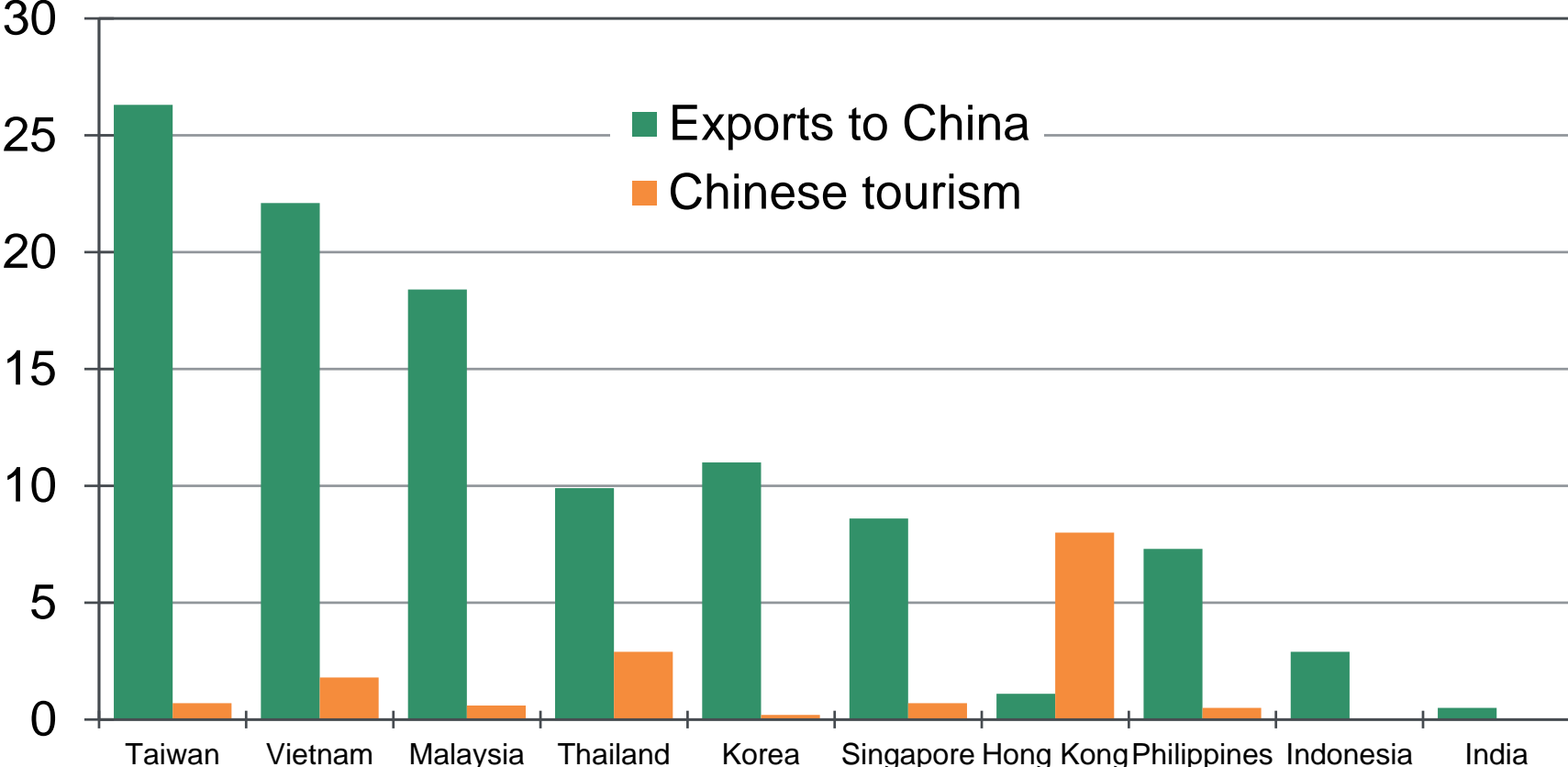
Total debt-to-GDP ratio, % (x-axis), 5-yr change, ppts, (y-axis)



Sources: IIF, Moody's Analytics

Asian Economies are Highly Exposed

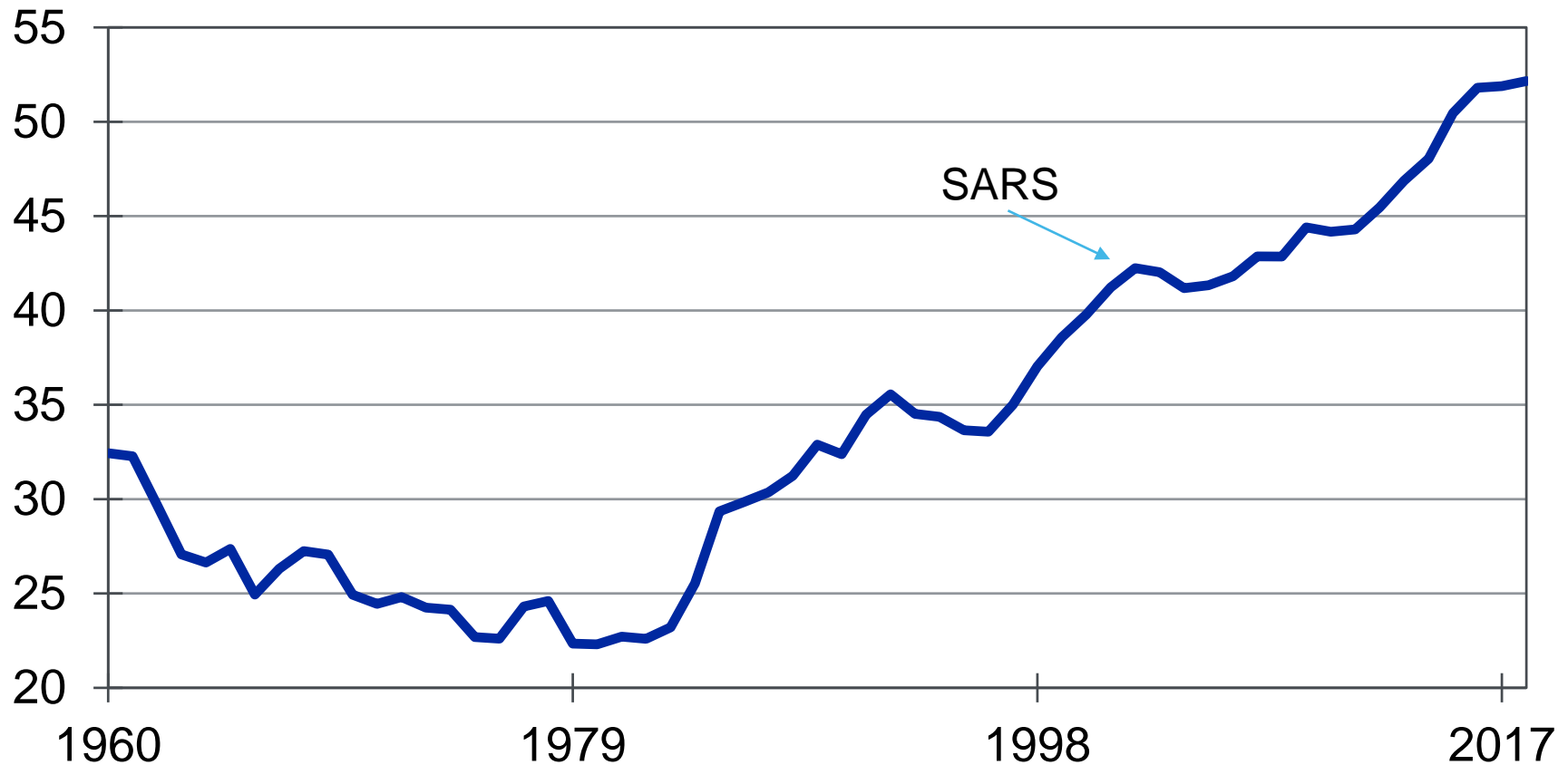
% of GDP, 2018



Sources: IMF, Government sources, Moody's Analytics

Services Have Become More Important

China services, value added (% of GDP)



Sources: World Bank, Moody's Analytics

Equity Markets During SARS in 2003

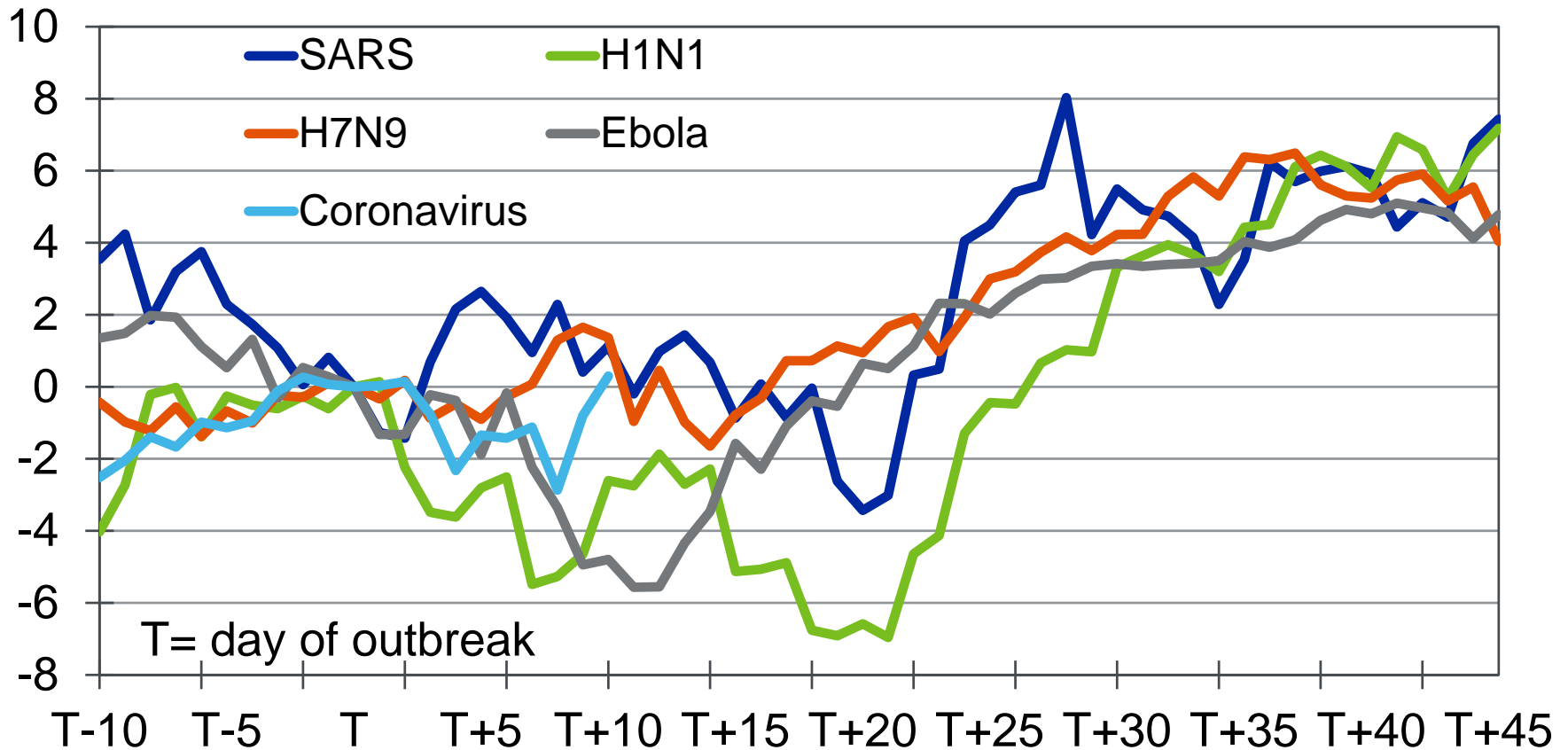
Index (1 Jan 2003 = 100)



Sources: Bloomberg, Moody's Analytics

How the Stock Market Fares Is Key

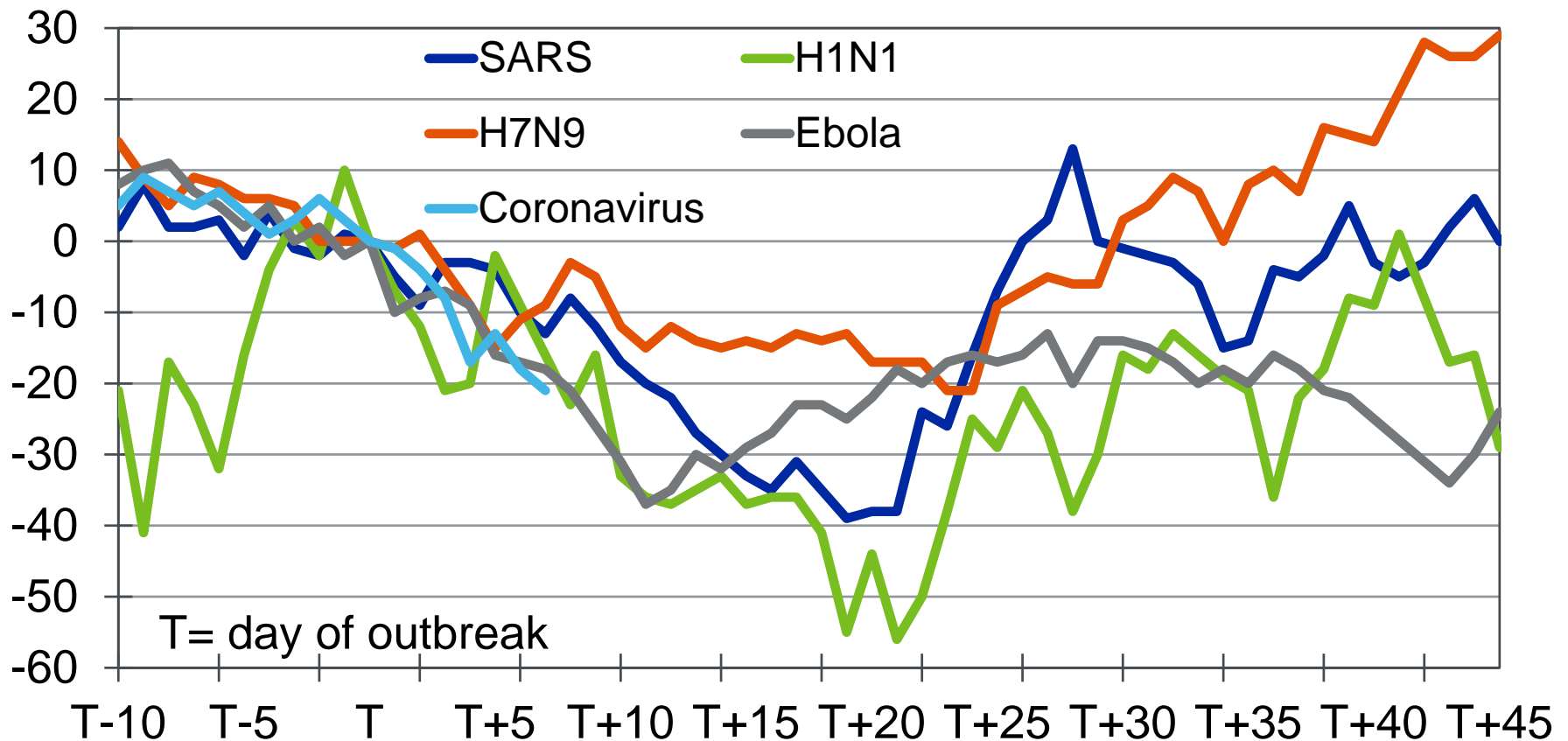
S&P 500, % change since day of outbreak



Source: Moody's Analytics

Temporary Drag on 10-Year Treasury Yield

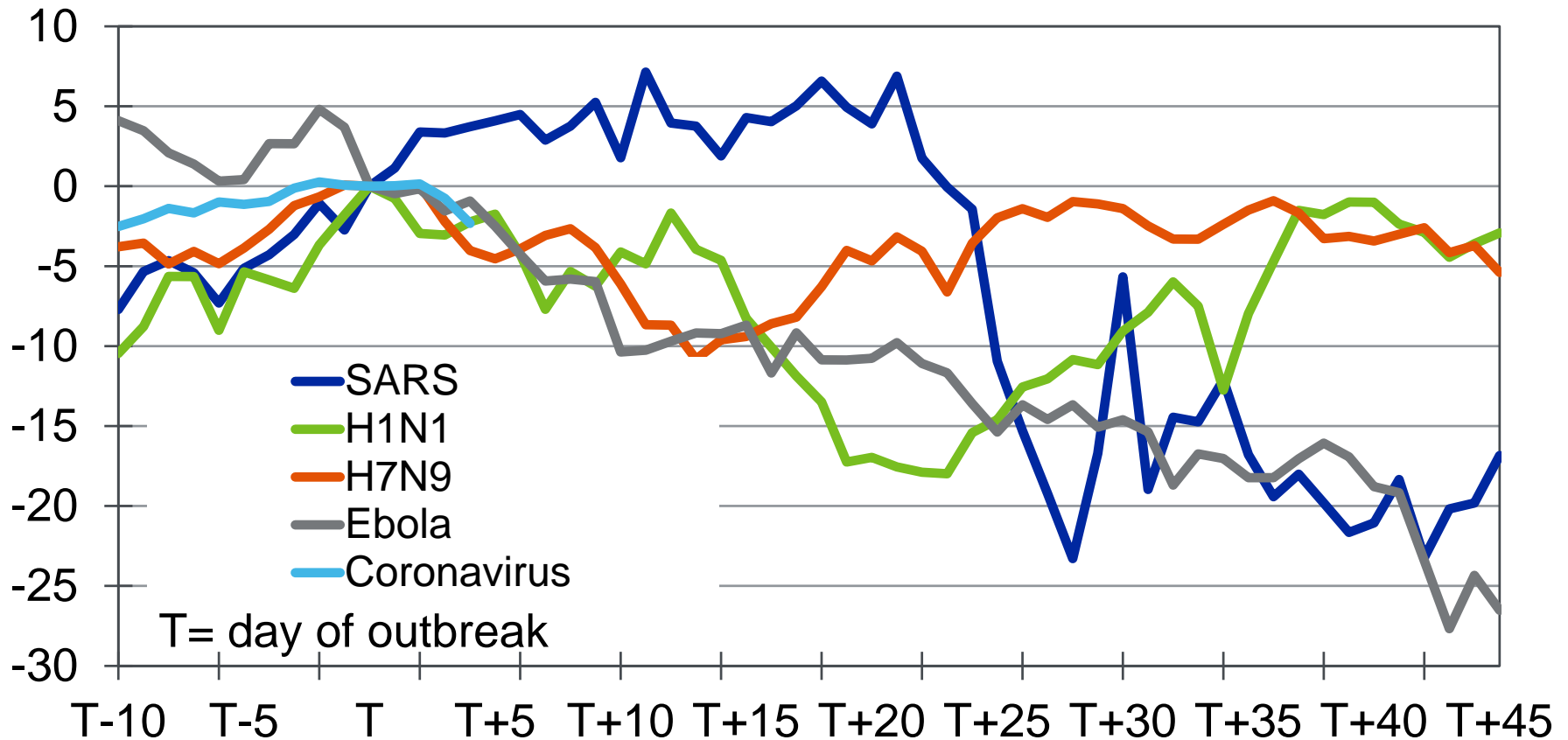
10-year Treasury yield, daily change since outbreak, bps



Source: Moody's Analytics

Oil Prices Could Fall Further

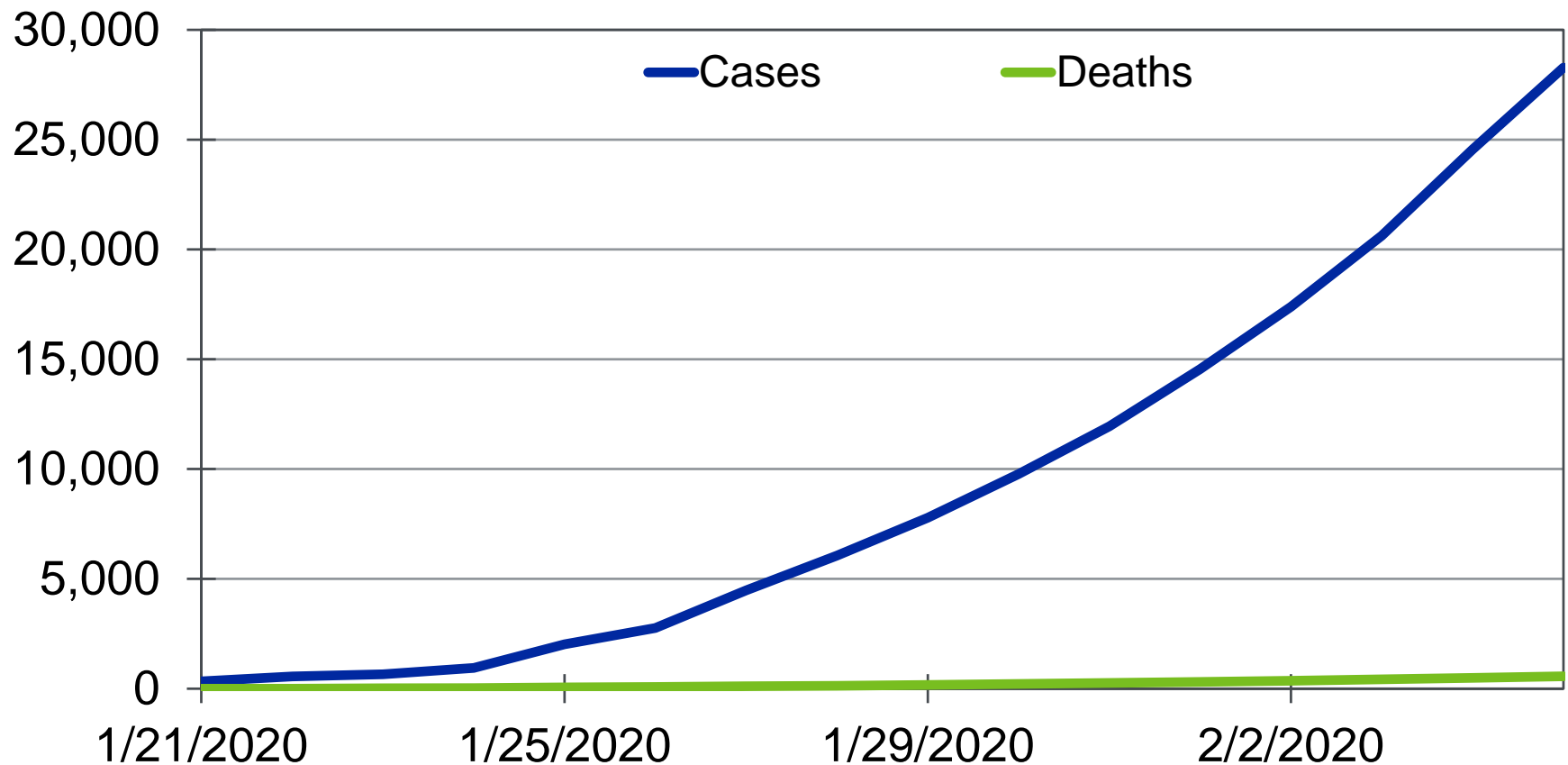
West Texas Intermediate oil, % change since day of outbreak



Source: Moody's Analytics

Monitoring the Coronavirus

Coronavirus reported cases and deaths, #



Sources: Bloomberg LP, Moody's Analytics

Contact Us: Economics & Business Analytics Offices

West Chester, EBA-HQ
+1.610.235.5299
121 North Walnut Street, Suite 500
West Chester PA 19380
USA

New York, Corporate-HQ
+1.212.553.1653
7 World Trade Center, 14th Floor
250 Greenwich Street
New York, NY 10007
USA

London
+44.20.7772.5454
One Canada Square
Canary Wharf
London E14 5FA
United Kingdom

Toronto
+1.416.681.2133
200 Wellington Street West, 15th Floor
Toronto ON M5V 3C7
Canada

Prague
+420.22.422.2929
AFI Butterfly
B1 3rd Floor, Pernerova 691/42
186 00 Prague 8 - Karlin
Czech Republic

Sydney
+61.2.9270.8111
Level 10, 1 O'Connell Street
Sydney, NSW, 2000
Australia

Singapore
+65.6511.4400
6 Shenton Way
#14-08 OUE Downtown 2
Singapore 068809

Shanghai
+86.21.6101.0172
Unit 2306, Citigroup Tower
33 Huayuanshiqiao Road
Pudong New Area, 200120
China

© 2020 Moody's Corporation, Moody's Investors Service, Inc., Moody's Analytics, Inc. and/or their licensors and affiliates (collectively, "MOODY'S"). All rights reserved.

CREDIT RATINGS ISSUED BY MOODY'S INVESTORS SERVICE, INC. AND ITS RATINGS AFFILIATES ("MIS") ARE MOODY'S CURRENT OPINIONS OF THE RELATIVE FUTURE CREDIT RISK OF ENTITIES, CREDIT COMMITMENTS, OR DEBT OR DEBT-LIKE SECURITIES, AND MOODY'S PUBLICATIONS MAY INCLUDE MOODY'S CURRENT OPINIONS OF THE RELATIVE FUTURE CREDIT RISK OF ENTITIES, CREDIT COMMITMENTS, OR DEBT OR DEBT-LIKE SECURITIES. MOODY'S DEFINES CREDIT RISK AS THE RISK THAT AN ENTITY MAY NOT MEET ITS CONTRACTUAL, FINANCIAL OBLIGATIONS AS THEY COME DUE AND ANY ESTIMATED FINANCIAL LOSS IN THE EVENT OF DEFAULT. CREDIT RATINGS DO NOT ADDRESS ANY OTHER RISK, INCLUDING BUT NOT LIMITED TO: LIQUIDITY RISK, MARKET VALUE RISK, OR PRICE VOLATILITY. CREDIT RATINGS AND MOODY'S OPINIONS INCLUDED IN MOODY'S PUBLICATIONS ARE NOT STATEMENTS OF CURRENT OR HISTORICAL FACT. MOODY'S PUBLICATIONS MAY ALSO INCLUDE QUANTITATIVE MODEL-BASED ESTIMATES OF CREDIT RISK AND RELATED OPINIONS OR COMMENTARY PUBLISHED BY MOODY'S ANALYTICS, INC. CREDIT RATINGS AND MOODY'S PUBLICATIONS DO NOT CONSTITUTE OR PROVIDE INVESTMENT OR FINANCIAL ADVICE, AND CREDIT RATINGS AND MOODY'S PUBLICATIONS ARE NOT AND DO NOT PROVIDE RECOMMENDATIONS TO PURCHASE, SELL, OR HOLD PARTICULAR SECURITIES. NEITHER CREDIT RATINGS NOR MOODY'S PUBLICATIONS COMMENT ON THE SUITABILITY OF AN INVESTMENT FOR ANY PARTICULAR INVESTOR. MOODY'S ISSUES ITS CREDIT RATINGS AND PUBLISHES MOODY'S PUBLICATIONS WITH THE EXPECTATION AND UNDERSTANDING THAT EACH INVESTOR WILL, WITH DUE CARE, MAKE ITS OWN STUDY AND EVALUATION OF EACH SECURITY THAT IS UNDER CONSIDERATION FOR PURCHASE, HOLDING, OR SALE.

MOODY'S CREDIT RATINGS AND MOODY'S PUBLICATIONS ARE NOT INTENDED FOR USE BY RETAIL INVESTORS AND IT WOULD BE RECKLESS AND INAPPROPRIATE FOR RETAIL INVESTORS TO USE MOODY'S CREDIT RATINGS OR MOODY'S PUBLICATIONS WHEN MAKING AN INVESTMENT DECISION. IF IN DOUBT YOU SHOULD CONTACT YOUR FINANCIAL OR OTHER PROFESSIONAL ADVISER.

ALL INFORMATION CONTAINED HEREIN IS PROTECTED BY LAW, INCLUDING BUT NOT LIMITED TO, COPYRIGHT LAW, AND NONE OF SUCH INFORMATION MAY BE COPIED OR OTHERWISE REPRODUCED, REPACKAGED, FURTHER TRANSMITTED, TRANSFERRED, DISSEMINATED, REDISTRIBUTED OR RESOLD, OR STORED FOR SUBSEQUENT USE FOR ANY SUCH PURPOSE, IN WHOLE OR IN PART, IN ANY FORM OR MANNER OR BY ANY MEANS WHATSOEVER, BY ANY PERSON WITHOUT MOODY'S PRIOR WRITTEN CONSENT.

All information contained herein is obtained by MOODY'S from sources believed by it to be accurate and reliable. Because of the possibility of human or mechanical error as well as other factors, however, all information contained herein is provided "AS IS" without warranty of any kind. MOODY'S adopts all necessary measures so that the information it uses in assigning a credit rating is of sufficient quality and from sources MOODY'S considers to be reliable including, when appropriate, independent third-party sources. However, MOODY'S is not an auditor and cannot in every instance independently verify or validate information received in the rating process or in preparing the Moody's publications.

To the extent permitted by law, MOODY'S and its directors, officers, employees, agents, representatives, licensors and suppliers disclaim liability to any person or entity for any indirect, special, consequential, or incidental losses or damages whatsoever arising from or in connection with the information contained herein or the use of or inability to use any such information, even if MOODY'S or any of its directors, officers, employees, agents, representatives, licensors or suppliers is advised in advance of the possibility of such losses or damages, including but not limited to: (a) any loss of present or prospective profits or (b) any loss or damage arising where the relevant financial instrument is not the subject of a particular credit rating assigned by MOODY'S.

To the extent permitted by law, MOODY'S and its directors, officers, employees, agents, representatives, licensors and suppliers disclaim liability for any direct or compensatory losses or damages caused to any person or entity, including but not limited to by any negligence (but excluding fraud, willful misconduct or any other type of liability that, for the avoidance of doubt, by law cannot be excluded) on the part of, or any contingency within or beyond the control of, MOODY'S or any of its directors, officers, employees, agents, representatives, licensors or suppliers, arising from or in connection with the information contained herein or the use of or inability to use any such information.

NO WARRANTY, EXPRESS OR IMPLIED, AS TO THE ACCURACY, TIMELINESS, COMPLETENESS, MERCHANTABILITY OR FITNESS FOR ANY PARTICULAR PURPOSE OF ANY SUCH RATING OR OTHER OPINION OR INFORMATION IS GIVEN OR MADE BY MOODY'S IN ANY FORM OR MANNER WHATSOEVER.

Moody's Investors Service, Inc., a wholly-owned credit rating agency subsidiary of Moody's Corporation ("MCO"), hereby discloses that most issuers of debt securities (including corporate and municipal bonds, debentures, notes and commercial paper) and preferred stock rated by Moody's Investors Service, Inc. have, prior to assignment of any rating, agreed to pay to Moody's Investors Service, Inc. for appraisal and rating services rendered by it fees ranging from \$1,500 to approximately \$2,500,000. MCO and MIS also maintain policies and procedures to address the independence of MIS's ratings and rating processes. Information regarding certain affiliations that may exist between directors of MCO and rated entities, and between entities who hold ratings from MIS and have also publicly reported to the SEC an ownership interest in MCO of more than 5%, is posted annually at www.moody's.com under the heading "Investor Relations — Corporate Governance — Director and Shareholder Affiliation Policy."

Additional terms for Australia only: Any publication into Australia of this document is pursuant to the Australian Financial Services License of MOODY'S affiliate, Moody's Investors Service Pty Limited ABN 61 003 399 657AFSL 336969 and/or Moody's Analytics Australia Pty Ltd ABN 94 105 136 972 AFSL 383569 (as applicable). This document is intended to be provided only to "wholesale clients" within the meaning of section 761G of the Corporations Act 2001. By continuing to access this document from within Australia, you represent to MOODY'S that you are, or are accessing the document as a representative of, a "wholesale client" and that neither you nor the entity you represent will directly or indirectly disseminate this document or its contents to "retail clients" within the meaning of section 761G of the Corporations Act 2001. MOODY'S credit rating is an opinion as to the creditworthiness of a debt obligation of the issuer, not on the equity securities of the issuer or any form of security that is available to retail investors. It would be reckless and inappropriate for retail investors to use MOODY'S credit ratings or publications when making an investment decision. If in doubt you should contact your financial or other professional adviser.

Additional terms for Japan only: Moody's Japan K.K. ("MJKK") is a wholly-owned credit rating agency subsidiary of Moody's Group Japan G.K., which is wholly-owned by Moody's Overseas Holdings Inc., a wholly-owned subsidiary of MCO. Moody's SF Japan K.K. ("MSFJ") is a wholly-owned credit rating agency subsidiary of MJKK. MSFJ is not a Nationally Recognized Statistical Rating Organization ("NRSRO"). Therefore, credit ratings assigned by MSFJ are Non-NRSRO Credit Ratings. Non-NRSRO Credit Ratings are assigned by an entity that is not a NRSRO and, consequently, the rated obligation will not qualify for certain types of treatment under U.S. laws. MJKK and MSFJ are credit rating agencies registered with the Japan Financial Services Agency and their registration numbers are FSA Commissioner (Ratings) No. 2 and 3 respectively.

MJKK or MSFJ (as applicable) hereby disclose that most issuers of debt securities (including corporate and municipal bonds, debentures, notes and commercial paper) and preferred stock rated by MJKK or MSFJ (as applicable) have, prior to assignment of any rating, agreed to pay to MJKK or MSFJ (as applicable) for appraisal and rating services rendered by it fees ranging from JPY200,000 to approximately JPY350,000,000.

MJKK and MSFJ also maintain policies and procedures to address Japanese regulatory requirements.